

UPVC | Aluminium | Doors | Façades
Premium Doors & Windows System



FRAMELUX

LUXURY IN EVERY FRAME



Customer Care +91 9257111070

 www.framelux.co.in

SCAN QR FOR WEBSITE



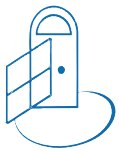
SCAN QR FOR INSTAGRAM





OUR PROFILE PARTNERS :

ALUMINIUM DOOR & WINDOWS



FRAMELUX™
Luxury in every frame

Framelux Established with a commitment to precision and durability, we specialize in the manufacturing of high-quality aluminum doors and windows. Our company leverages cutting-edge technology and premium-grade materials to craft products that seamlessly blend aesthetic appeal with functional excellence. We cater to diverse architectural needs, offering

customizable solutions for residential and commercial spaces. Our focus extends beyond mere production; we prioritize energy efficiency, security, and long-term performance. From sleek, modern designs to classic, timeless styles, we ensure every product reflects our dedication to superior craftsmanship. We strive to be a trusted partner, delivering reliable and visually stunning aluminum door and window solutions that enhance the value and comfort of any property.

Advantages & Benefits Aluminium



HIGH
QUALITY



LOW
MAINTENANCE



WEATHER
PROOF



HIGH WIND
RESISTANCE



100%
RECYCLABLE



CHOICE
OF COLOURS

UPVC DOOR & WINDOWS



ENCRAFT
ART OF PRECISION

People choose Encraft for their uPVC doors and windows primarily because of their high quality, energy efficiency, durability, low maintenance needs, wide range of design options, and adaptability to various Indian climates, making them a cost-effective choice for both residential and commercial

properties while enhancing the aesthetic appeal of a home; essentially offering a balance between style, functionality, and sustainability.

Advantages & Benefits UPVC



WIND LOAD
RESISTANT



WEATHER
RESISTANT



UV RESISTANT



TERMITE PROOF



STRONG & SECURE



ENERGY EFFICIENT



SOUND INSULATION



SENSIBLY GREEN



SELF EXTINGUISHING



COMPANY OVERVIEW

About Us

Welcome to Framelux Building Systems, where innovation meets excellence in the design and manufacturing of premium window and door systems. Recognized as one of India's leading providers in this space, we specialize in delivering tailored solutions for modern residential and commercial projects. Our comprehensive product line integrates cutting-edge technology, aesthetic finesse, and unparalleled performance to redefine comfort and functionality.

At Framelux, quality is the foundation of everything we do. We prioritize precision craftsmanship, using superior materials to ensure durability, longevity, and exceptional performance.

OUR GOAL

Mission

At Framelux Building Systems, our mission is to enhance living and working spaces with premium, energy-efficient window and door systems. We are committed to delivering innovative, sustainable, and high-performance solutions that combine superior craftsmanship, advanced technology, and personalized service.

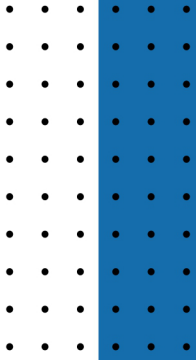
Our goal is to provide exceptional quality and lasting value while exceeding customer expectations at every step of the journey.

Vision

Our vision is to set new benchmarks in the fenestration industry by delivering innovative, sustainable, and aesthetically superior window and door solutions. We strive to be the trusted partner of choice for architects, designers, and homeowners, transforming spaces with products that blend functionality, elegance, and environmental responsibility.

Through continuous innovation and an unwavering commitment to quality, we aim to lead the way in shaping the future of modern living and architectural excellence.

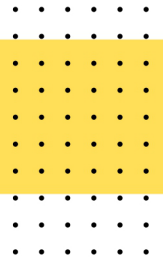




OUR PROCESS

- Consultation Visit**
Our process starts with a personalized consultation to assess challenges like noise, dust, rain, strong winds, or poor sunlight. Framelux offers tailored solutions to meet your specific needs.
 - Customised Designs**
Framelux experts will recommend effective, long-lasting solutions, ensuring your windows are perfectly customized to provide optimal performance and durability for years to come.
 - Survey (final measurements & discussion)**
This step involves precise measurements of each aperture and final approvals on selections made by the customer
 - Manufacturing**
Once your selections are finalized, Framelux proceeds with the precise manufacturing of your customized windows and doors, ensuring quality and perfection in every detail.
 - Delivery & installation**
Framelux windows are delivered on schedule, and installation begins after civil work is completed using anchor fasteners and sealants for a secure and durable fit.
 - Cleaning & Handover**
After installation, Framelux ensures a thorough site cleanup. Our technicians provide a practical demonstration of each window to ensure your complete understanding and satisfaction.
 - After-Sales Support**
Our customer service cell works for 365 days. You can call us at 9257111070 (Toll free), or email at info@framelux.co.in for any help that you require for smooth operations of your windows.
-

PRODUCT RANGE



The Villa Window

A rare combination of style and substance, the Villa Window when launched was the first to introduce a twin sash, bug mesh and a grill built in the system. This ensures enhanced security and ventilation while not allowing insects and mosquitoes inside.

Available in uPVC



Tilt and Turn Window

Welcome more sunlight and ventilation inside your home with these Tilt & Turn windows. Featuring a sash that can tilt open at an angle from the top with hinges at the bottom or can swing inwards with hinges on the side.

Available in uPVC and Aluminium.



Slider Window and Door

Featuring horizontal sashes fitted with rollers at the bottom, these windows optimize space with their swift sideways movement. Easy to open and shut, gives you great ventilation and the widest view possible. Slider door is available in threshold and non-threshold options.

Available in uPVC and Aluminium.

PRODUCT RANGE

Casement Window

Featuring a sash, hinged on the side of an outer frame, opens inwards or outwards for optimal ventilation. With double/triple glazing, they offer improved thermal and sound insulation. The windows feature multiple-point locking and a friction stay, keeping the window secure even in strong winds.

Available in uPVC and Aluminium.



Slide & Fold Door

Framelux Slide and Fold Doors seamlessly connect indoor spaces with outdoor views, ideal for rooms overlooking gardens or terraces. Their unique slide-and-fold mechanism allows effortless division or unification of large openings. Stylish and durable, with a fusion-welded frame and sash, they ensure timeless elegance.

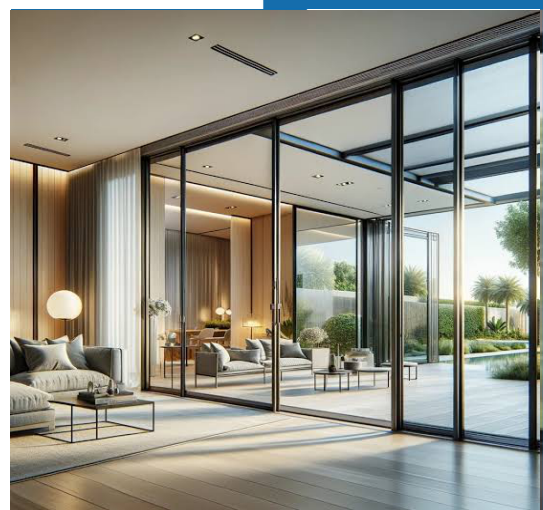
Available in uPVC and Aluminium.



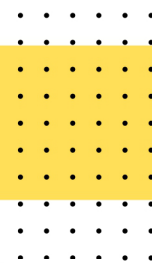
Center Openable Sliding Door

Explore a new possibility with extended length and breadth (2000 mm x 4200 mm) along with adding exquisiteness to the environment with large slider doors which offers minimally visible sightlines of 30 mm for maximized visibility along with scoring high on functionalities

Available in Aluminium.



PRODUCT RANGE



Sleek Interlock Sliding Door

Framelux range of Slimline Sliding Doors offers minimally visible aluminium sight lines of 25mm, which maximises the view you get. With a great balance of functionality and style, these Aluminium doors add exquisiteness to the façades they are used in.

[Available in Aluminium.](#)



Vertical Slider Window

Framelux Vertical Slider Windows. a traditional fenestration concept that has become the perfect solution for ancillary frames when the opening aperture is taller than width. Its simple operation is based on a pair of frame specific, site tensioned, spiral balances that can hold the sash open in any position. Requiring less space enabling the modern uPVC vertical slider to fit perfectly into both aperture types. straight through or reveal.

[Available in Aluminium & UPVC.](#)



French door with Georgian bars

Introducing our Aluminium & UPVC doors with Georgian Bars, designed to give your home a smart and effortlessly stylish look reminiscent of a charming bungalow. Crafted with precision, these doors offer a timeless aesthetic that adds character to any space. With their classic design and attention to detail, they effortlessly enhance the exterior of your home, creating a welcoming atmosphere.

[Available in Aluminium.& UPVC](#)

PRODUCT RANGE

Glass-to-Glass Window

Features a fixed window unit, where the glass panes meet at an angle of 90° and are neatly joined together without using any mullions.

Available in uPVC and Aluminium



Internal Door

Framelux Internal Doors, crafted from a hybrid polymer, are eco-friendly and durable. This composite of wood fiber and thermoplasts resists termites, water, moisture, fire, and weather wear. Unlike traditional doors, they are low-maintenance, high-quality, and long-lasting.

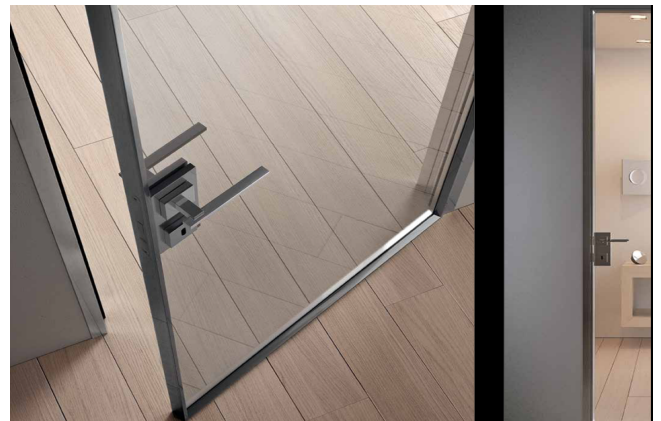


Designer Laminated Doors

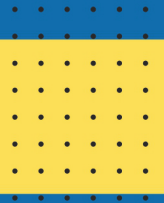
- Doors Construction : Flush Door
- Flush Door Glue : PF
- Thickness : 30, 35, 37, 40, 44, 50 mm
- Laminate : 1mm/0.8mm HPL
- Laminate Glue : D3
- Door Filler Options : Tubular Particle/Solid Particle/ Solid Wood Filling



SLIM PROFILE DOOR



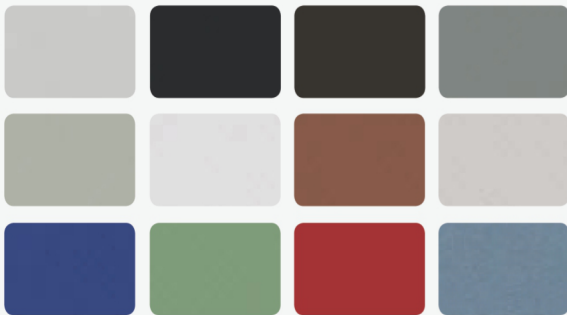
Aluminium Colour Palette



Myriad Colours of Perfection

POWDER FINISHING FOR THE COLOUR YOU WANT

Thanks to the high quality enamelling of the powder finished profiles, the elements of aluminium retain their original brilliance even after many years and do not need a fresh coat of paint. You can choose from the whole RAL palette with over 200 colours. These RAL colours are available in glossy, matt, and textured.

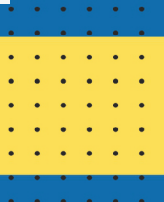


ANODIC FINISHING FOR A BRILLIANT LOOK

The process yields brilliant surfaces and characteristic metallic effects. Anodic finishing is a benefit not only for the look. It also provides long lasting protection against increasingly aggressive environmental effects. Furthermore, anodised surfaces are insensitive to mechanical effects and are easy to clean.



UPVC Colour Palette





FRAMELUXTM
Luxury in every frame

Add A Touch Of Sophistication With Our Aluminium Doors & Windows

 [framelux.in](https://www.instagram.com/framelux.in) |  [@Framelux1220](https://www.youtube.com/@Framelux1220) |  <https://www.framelux.co.in/> |  info@framelux.co.in |  sales@framelux.co.in

Diseno Building Systems Pvt Ltd

Reg. Add. :- Chak 16 ML, Near Hyundai Workshop, Abohar Bypass Road, Sriganaganagar

Branch Office :- Adithi Elite, Gear Road Bhoganhalli, Bangalore 560103, India